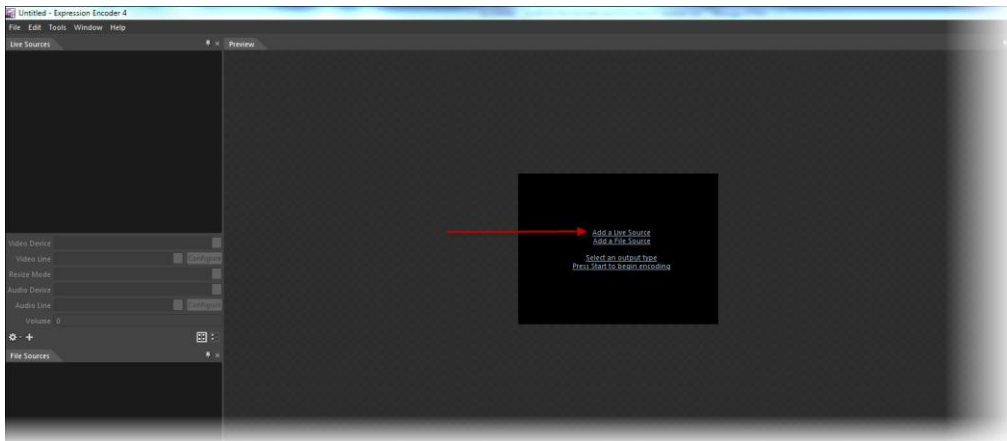
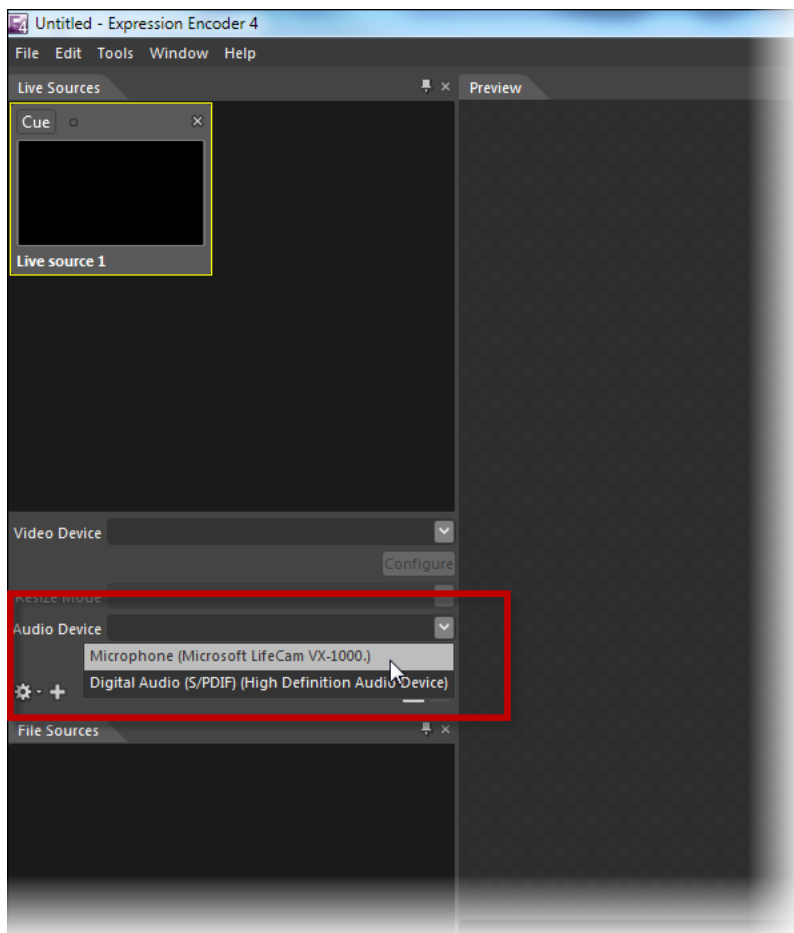


Broadcasting Around Your Own Network (connecting directly to Expression)

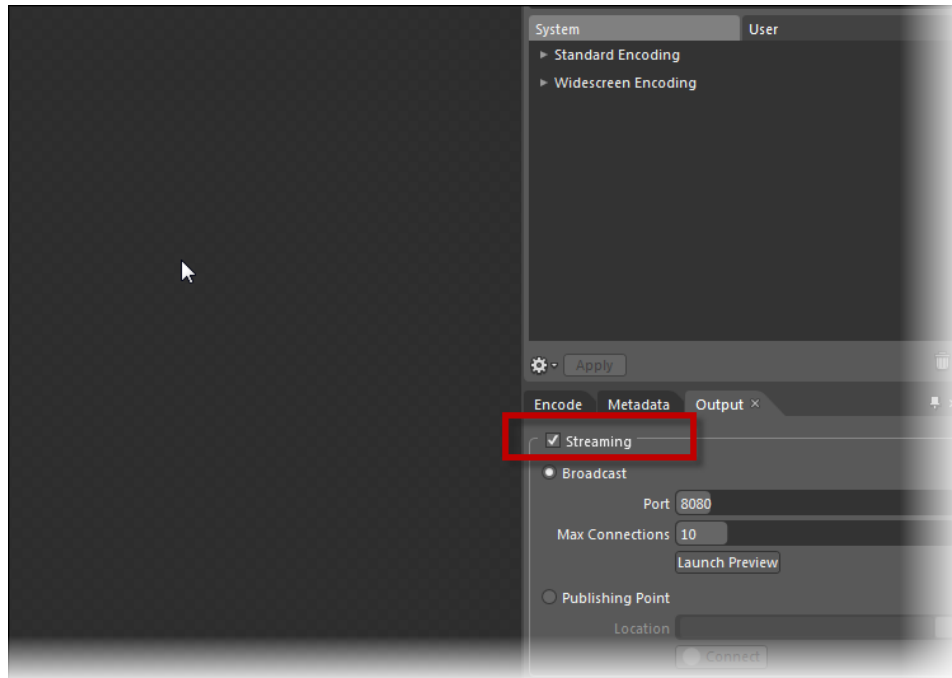
1. Once you have installed Microsoft Expression Encoder 4 (free version), run the software and click on the Add A Live Source option.



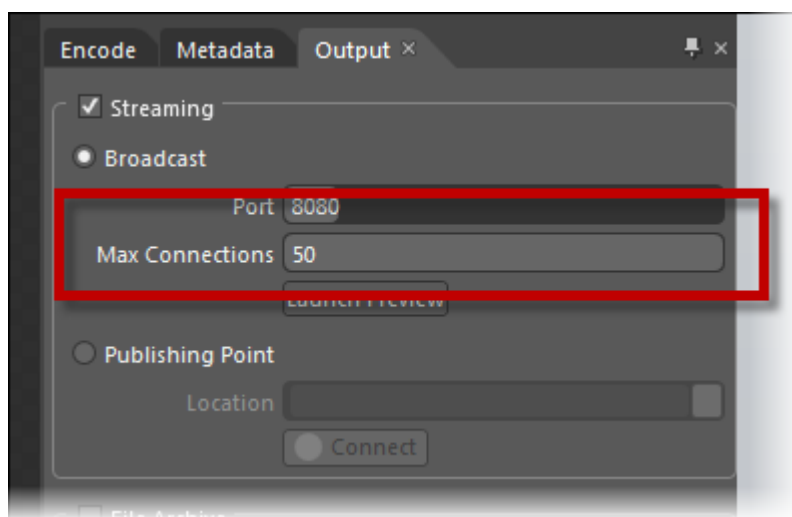
2. Use the Audio Device drop down to select the soundcard input that you want to use.



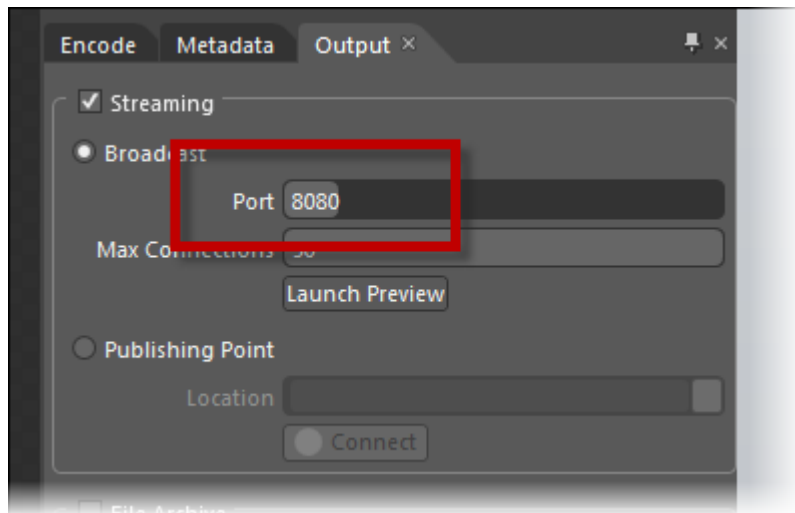
3. On the right hand side Output tab, click the streaming option to switch on internal streaming.



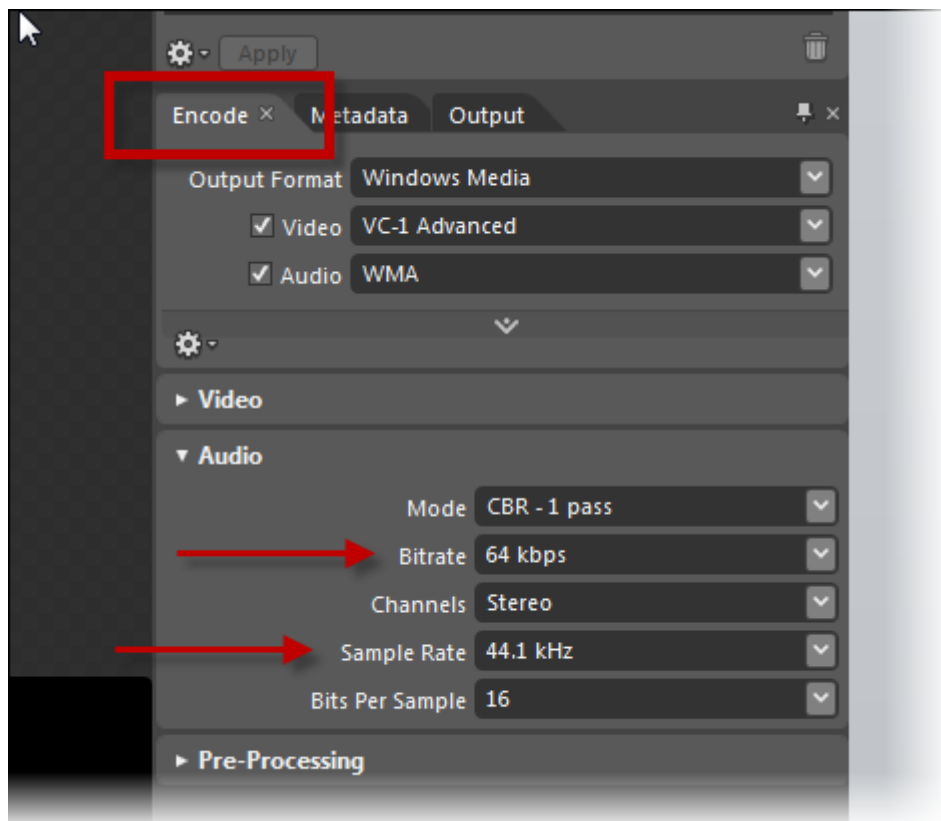
4. Drag the Max Connections bar to 50 to increase the maximum number of connections.



5. Make a note of the Port number being used to broadcast. You can change this if you like.



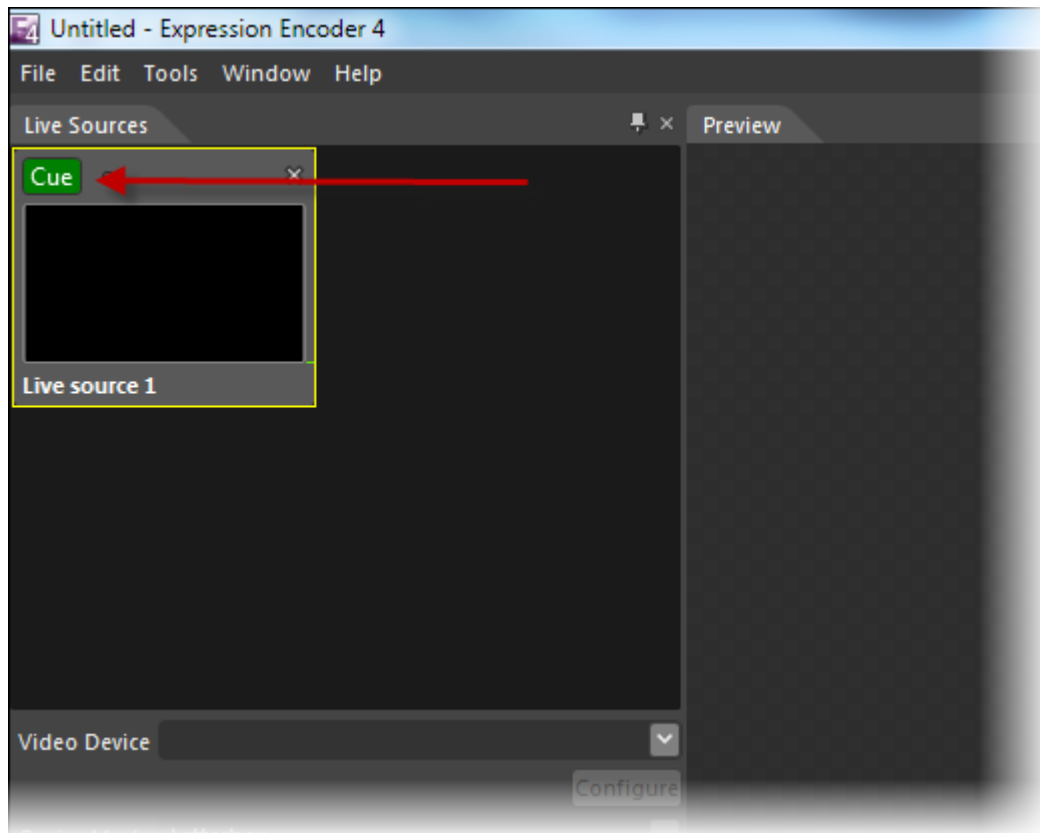
6. Next click on the Encode tab and expand the Audio section. This section allows you to set the quality of the audio being encoded (streaming rate).



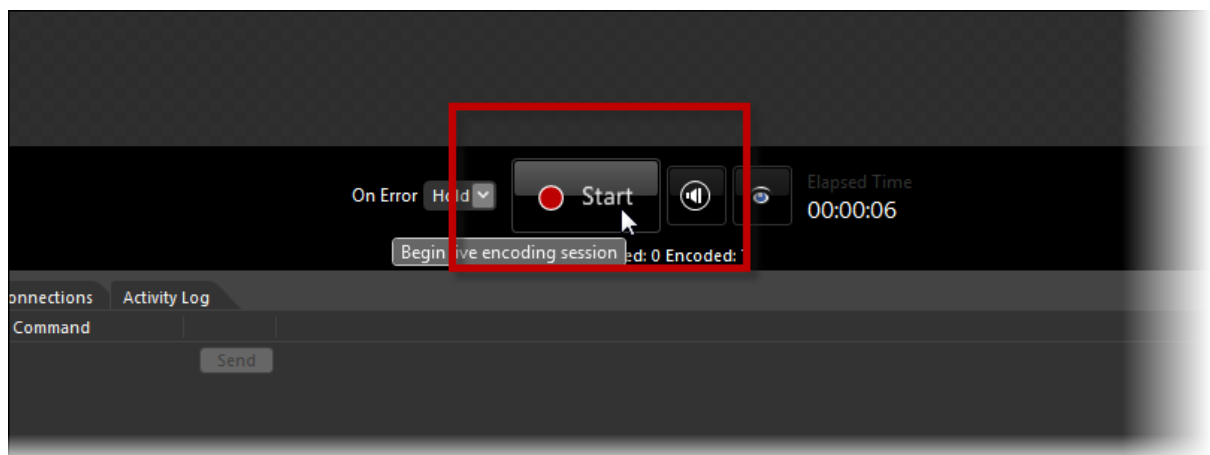
We recommend the following settings:

- Mode: CBR – 1 Pass
- Bitrate: 64kbps (important)
- Channels: Stereo
- Sample Rate: 44.1kHz (important)
- Bits Per Sample: 16

7. Back on the left hand side Live Sources tab, click on the Cue button on the Live Source we added in step 1.

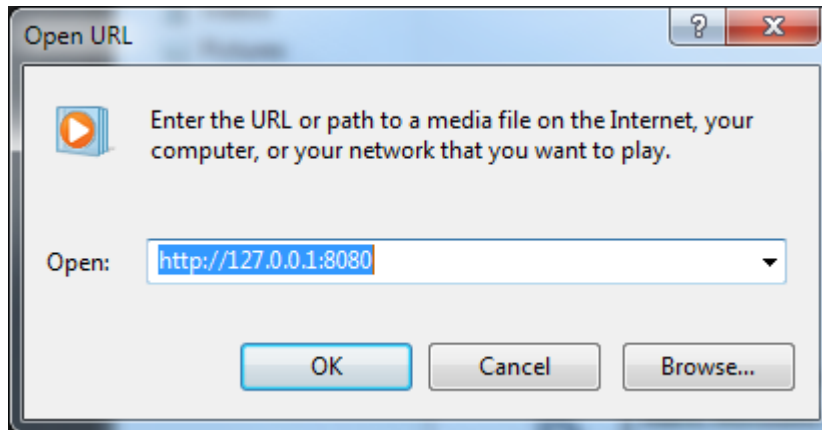


8. Click on the Start button in the centre of the window to begin broadcasting. You may be asked to allow Expression data through the windows Firewall, if so then click on OK to allow the firewall to be adjusted accordingly.



You are now broadcasting on your network.

You can access your broadcast by running Media Player, clicking on File Menu > Open URL (hint you need to right click on the top menu bar to actually access the menus on Windows Media 12).



You can type in the IP address and broadcast Port number for the PC that is running the Expression Encoding software. As long as there is a network path to the PC (and the encoder is running) then other devices in your network can listen to your broadcast.

Saving The Encoder Job

You can save these settings as an Encoder Job so that next time you want to broadcast you do not have to do everything again. To save the Encoder Job, use the File Menu > Save Job option and select a suitable name and location to save your encoder job to.

Next time you want to start streaming you can simply load the saved Encoder Job and click on the Start button.