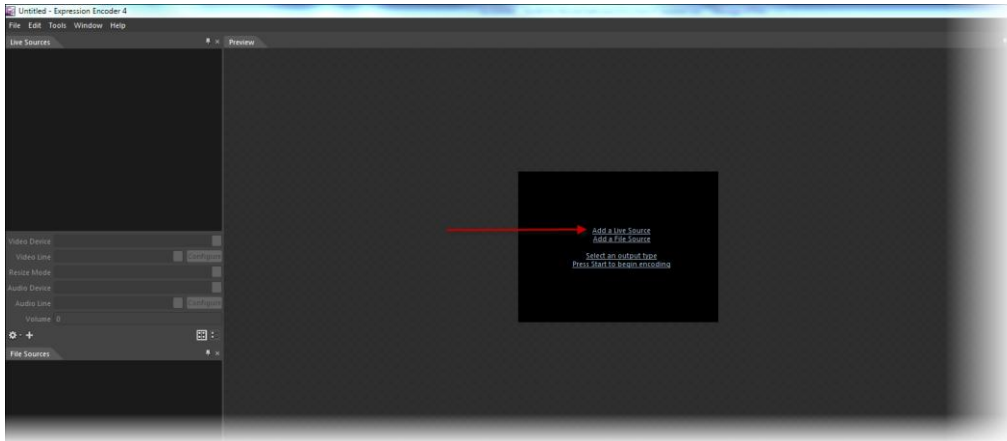
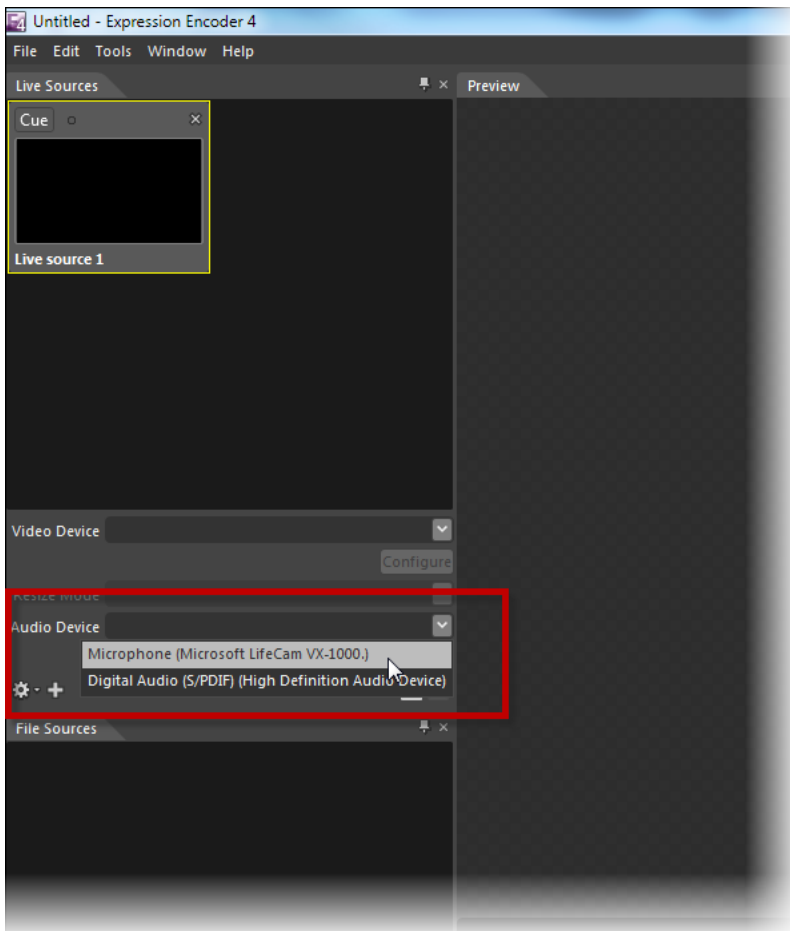


Broadcasting On The Web (connecting to P Squared streaming servers)

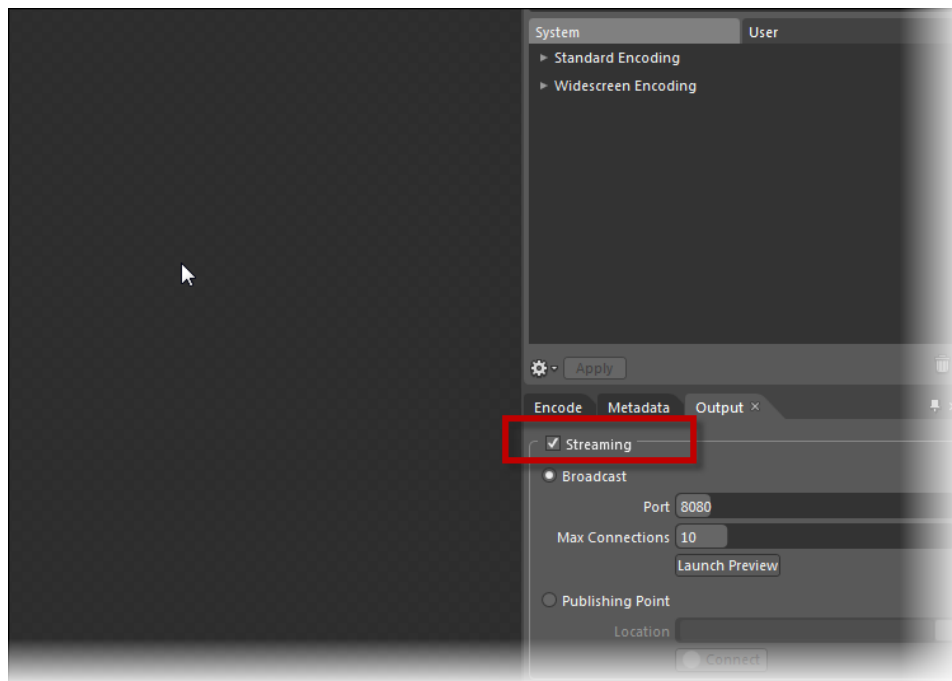
1. Once you have installed Microsoft Expression Encoder 4 (free version), run the software and click on the Add A Live Source option.



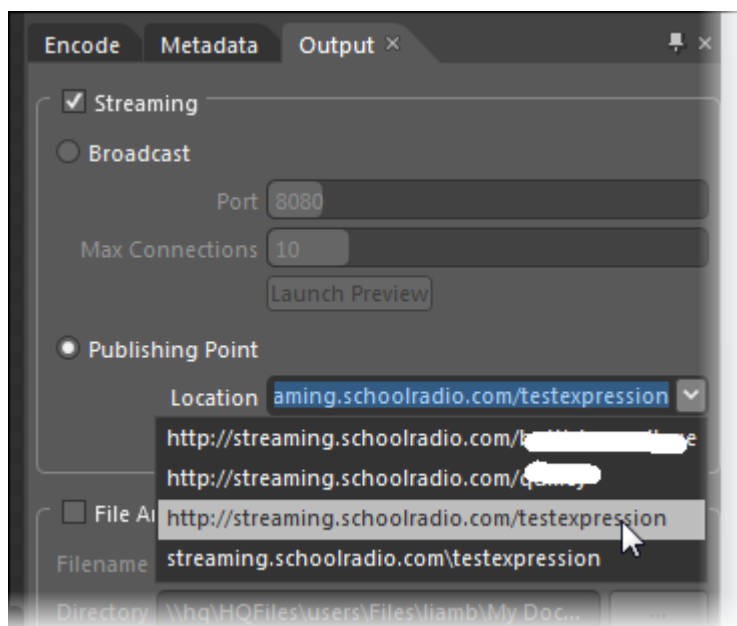
2. Use the Audio Device drop down to select the soundcard input that you want to use.



3. On the right hand side Output tab, click the streaming option to switch on internal streaming.



4. Select the Publishing Point option and type in the Streaming Server address provided by P Squared.

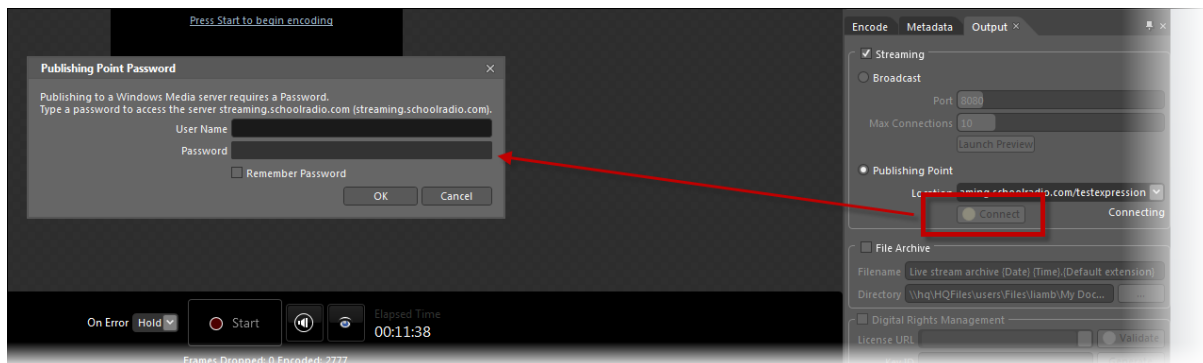


In most cases it will be something like:

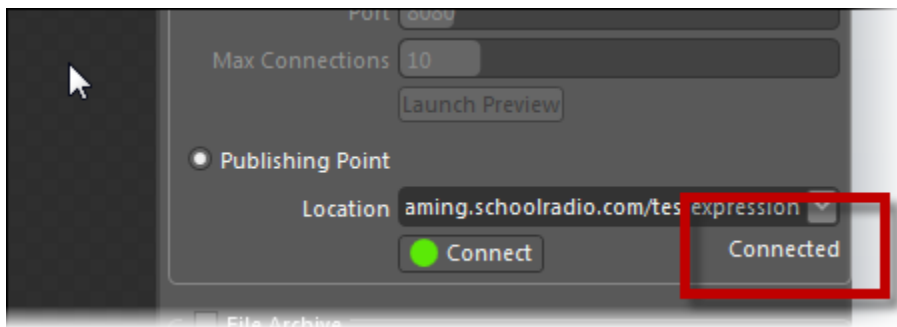
<http://streaming.schoolradio.com/YOURSCHOOLNAME>

But you will need to confirm this with P Squared.

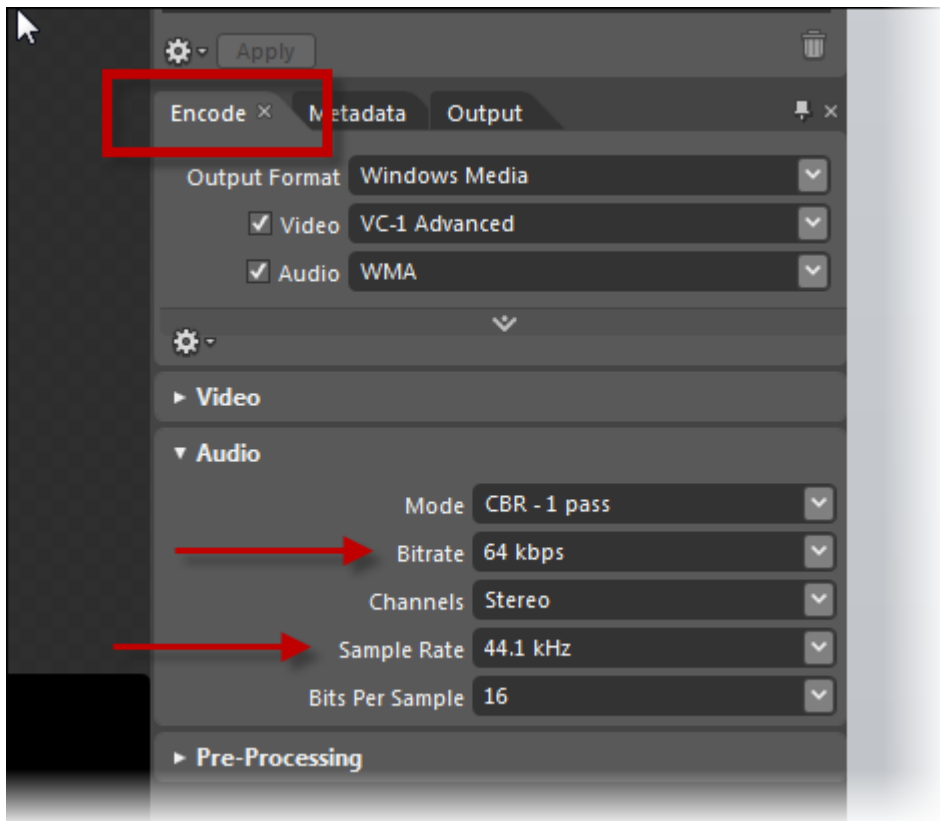
5. Click on the Connect button. You will then be asked to provide the Username and Password for streaming which will be provided by P Squared. Take care to enter the details exactly as supplied including characters and cases. You can click the Remember Password option if you do not want to type in the password each time.



This step might take several minutes depending on your network. The Status will change to Connected once you have successfully connected to our servers.



6. Next click on the Encode tab and expand the Audio section. This section allows you to set the quality of the audio being encoded (streaming rate).



We recommend the following settings:

Mode: CBR – 1 Pass

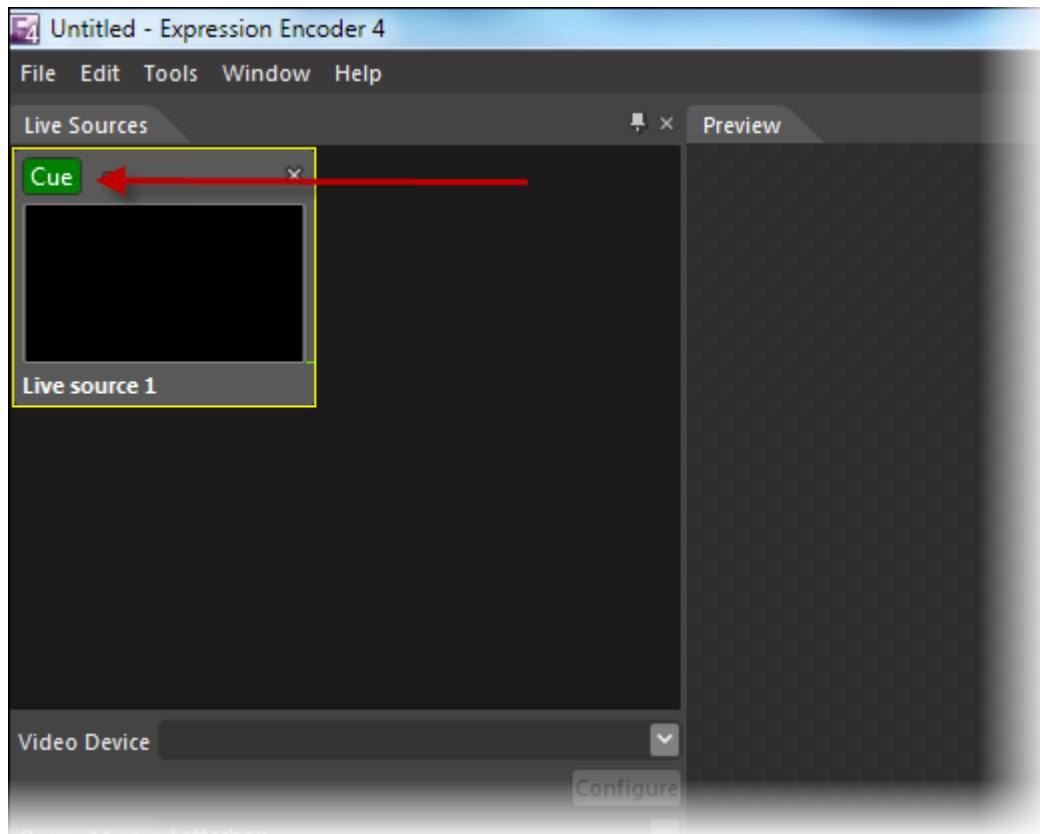
Bitrate: 64kbps

Channels: Stereo

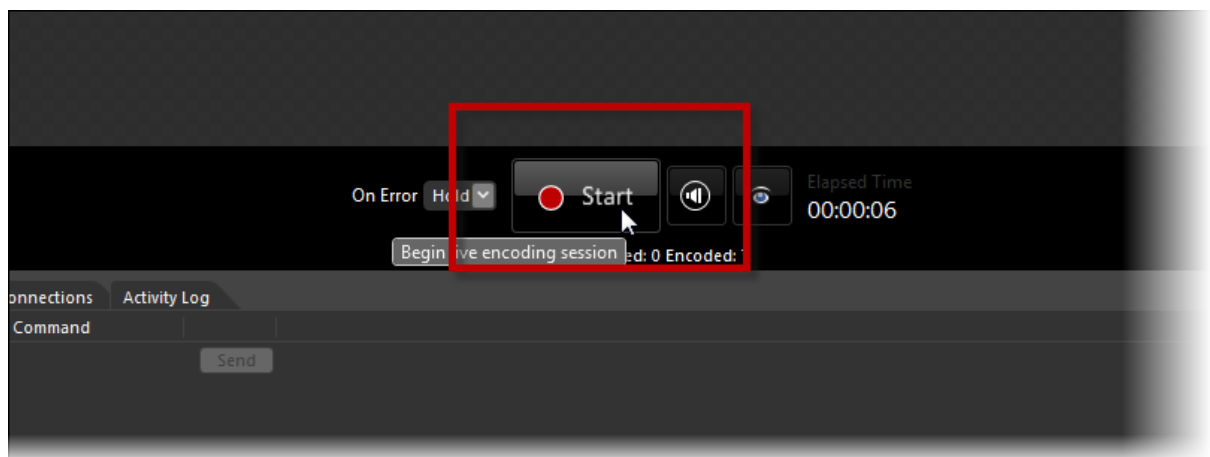
Sample Rate: 44.1kHz

Bits Per Sample: 16

7. Back on the left hand side Live Sources tab, click on the Cue button on the Live Source we added in step 1.

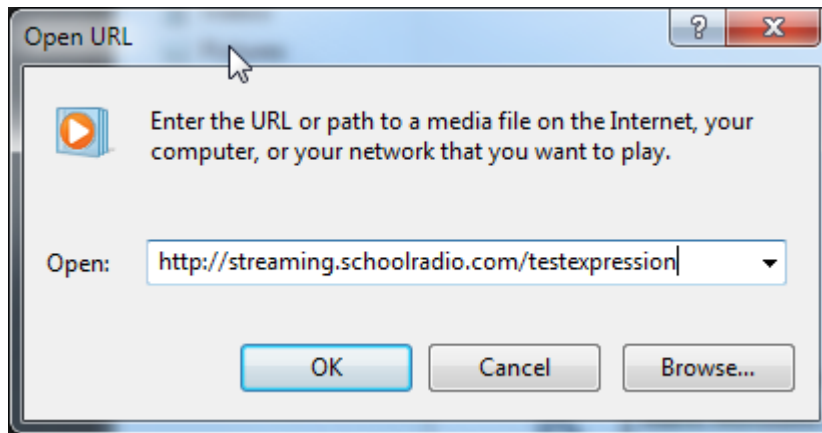


8. Click on the Start button in the centre of the window to begin broadcasting. You may be asked to allow Expression data through the windows Firewall, if so then click on OK to allow the firewall to be adjusted accordingly.



You are now broadcasting on your network.

You can access your broadcast by running Media Player, clicking on File Menu > Open URL (hint you need to right click on the top menu bar to actually access the menus on Windows Media 12).



You need to type in the address if the streaming server and publishing point as entered in step 4.

You should now be able to listen from any web connected PC as long as your encoder session is running.

Saving The Encoder Job

You can save these settings as an Encoder Job so that next time you want to broadcast you do not have to do everything again. To save the Encoder Job, use the File Menu > Save Job option and select a suitable name and location to save your encoder job to.

Next time you want to start streaming you can simply load the saved Encoder Job and click on the Start button.